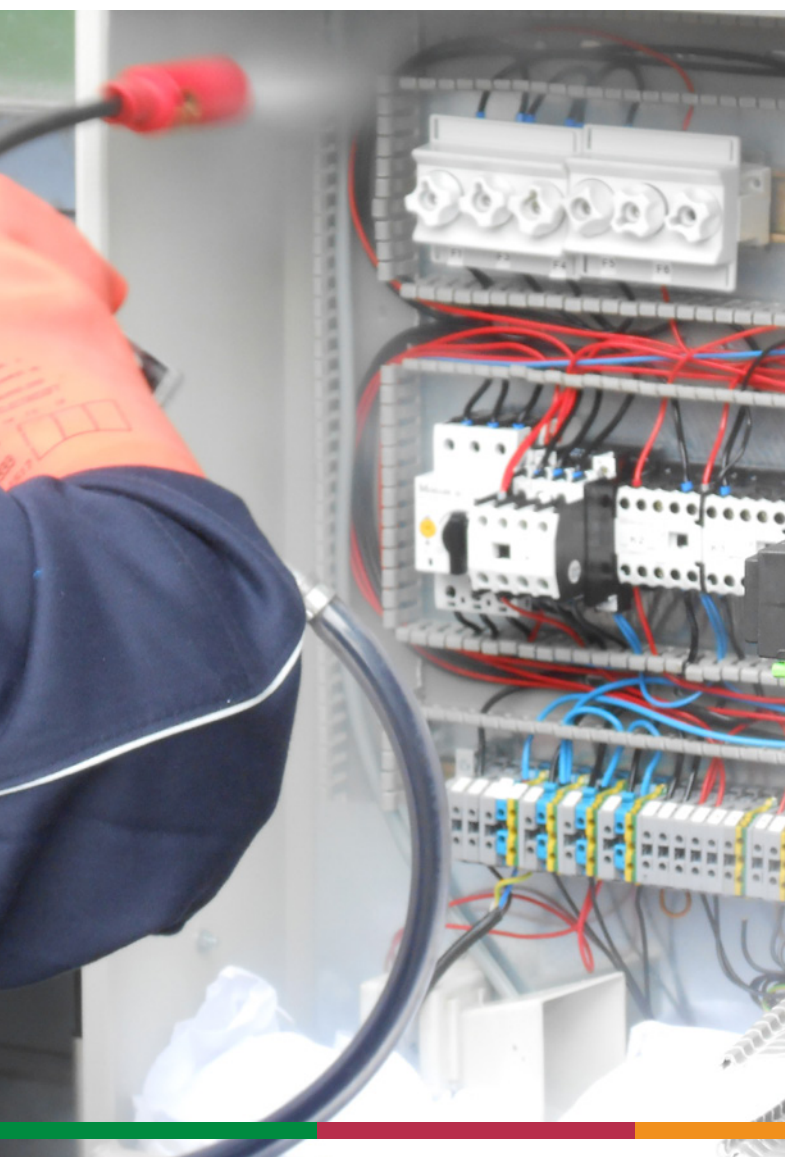


High pressure cleaning device SF 23 Pro

For the optimal processing of the Rivolta Safety cleaners



The benefits at a glance

- Safety spraying equipment such as high-pressure hand gun with dead man's safety device and double-insulated special high-pressure hose
- Compact and handy
- Unit stands on a mobile trolley
- Airless application of the cleaner via membrane technology
- Low noise level
- Very low material consumption

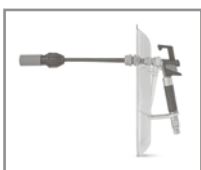


Property

The electric airless **high pressure cleaning device SF 23 Pro** is the ideal spraying device to process our Rivolta Safety cleaners. Due to its easy handling and mobility it is possible to use the device at several places in the company. The material reservoir of 5 litres guarantees a high readiness for service and a comfortable possibility to transport both device and material. The **high pressure cleaning device SF Pro** is characterized especially by its robust long-stroke membrane pump which is constructed for a high endurance.

Attachments

- Flexible spray tube with round nozzle and protection against contact
- High pressure spray gun in BG-Equipment. Including flexible spray tube with special nozzle in flat or round jet version, protection against contact and additional handshield (see picture on the right, this is a special equipment, especially for E-wet cleaning work under electrical voltage)
- Special double-insulated high-pressure hose available as an additional hose
- Double connector for connecting two special high-pressure hoses



Scope of delivery

Electrical high pressure cleaning device, 230 V/50 Hz, steplessly adjustable up to 180 bar, with safety spraying equipment consisting of:

- High pressure spray gun with dead man's safety control
- Special high pressure hose, double insulated
- Flexible spray tube with flat-jet nozzle and protection against contact
- Pressure control valve with manometer
- Material reservoir 5 litres
- Tool bag incl. tools for commissioning and maintenance

Further services

- Assembly of the cleaning device ready for use
- Instruction of the users how to handle the cleaning device by using our safety cleaners

General information

Subject to changes of construction.

	Value
Type of device	SF 23 Pro
Motor power	230 V/ 50 Hz 1,3 kW
Fuse protection	16 A slow-acting
Free delivery	2,3 Liter/min.
Volume flow rate at 120 bar	1,9 Liter/min.
Operating pressure	max. 180 bar
Weight	27 kg

Further accessories can be found in our [accessories brochure](#).